

No. Conf/2013/Result/ 13  
NOTIFICATION

The Result of the following Candidates who appeared in M.A. (I SEM) HISTORY Examination DECEMBER, 2012 are hereby declared successful (subject to scrutiny) as

COLLEGE : GOVT. GIRLS COLLEGE, REWA

PASS	12001	12002	12003	12004	12005	12006	12007	12008	12009	12010	12011
12012	12013	12014	12015	12016	12018	12019	12020	12021	12022	12023	
12024	12025	111859									

WITHELD  
111855

COLLEGE : I. G. VIDYASAGAR COLLEGE, JAWA, REWA

PASS	12026	12027	12028	12031	12033	12034					
12029											

COLLEGE : SETH R. P. S. COLLEGE, HANUMANNA, REWA

PASS	12041	12045	12046								
------	-------	-------	-------	--	--	--	--	--	--	--	--

COLLEGE : SRIYUT COLLEGE, GANGED, REWA

PASS	12047	12048	12049	12050	12051	12052					
------	-------	-------	-------	-------	-------	-------	--	--	--	--	--

COLLEGE : GOVT. JALAU TRIMURTI COLLEGE, NAGAUD

PASS	12054	12055	12056	12057	12058						
------	-------	-------	-------	-------	-------	--	--	--	--	--	--

COLLEGE : GOVT. COLLEGE, AMARPATAN, SATNA

PASS	12059	111873									
------	-------	--------	--	--	--	--	--	--	--	--	--

COLLEGE : SAI COLLEGE, VINDHYANAGAR, SINGRAULI

PASS	12060										
------	-------	--	--	--	--	--	--	--	--	--	--

COLLEGE : GOVT. I. G. H. S. COLLEGE, SHAHDOL											
--	--	--	--	--	--	--	--	--	--	--	--

PASS	12061	12062	12064								
------	-------	-------	-------	--	--	--	--	--	--	--	--

COORDINATOR

Signature  
REGISTRAR (M.P.)  
A. P. S. UNIVERSITY, REWA (M.P.)

Dated : 13/2013

No: Conf/2013/Result/ 14  
NOTIFICATION

The Result of the following Candidates who appeared in M.A. (I SEM) GEOGRAPHY Examination DECEMBER, 2012 are hereby declared successful (subject to scrutiny) as u

COLLEGE : Y. P. S. COLLEGE, SEMARIYA, REWA  
 PASS  
 12001 12002 12003 12004 12006 12007 12009 12010 12011 12012 12013  
 12014 12015  
 WITHHELD  
 12008

COLLEGE : I. C. VIDYASAGAR COLLEGE, JAWA, REWA  
 PASS  
 12016 12017 12018 12019 12020 12021 12022 12023 12024 12025 12026  
 12027 12028 12029 12030 12031 12032 12033 12034

COLLEGE : NEHRU SMARAK COLLEGE, CHAKGHAT, REWA  
 PASS  
 12037 12038 12040 12042 12045 12046 12047 12050  
 PROMOTED  
 10897 12039

COLLEGE : GOVT. S. K. COLLEGE, MAUGANJ, REWA  
 PASS  
 12051 12052 12053 12054 12055 12057 12058 12059 12060 12061 12062  
 12063 12064 12065 12066 12067 12068 12069 12070  
 PROMOTED  
 12056  
 WITHHELD  
 12071

COLLEGE : SETHI R. P. S. COLLEGE, HANUMANNA, REWA  
 PASS  
 12072 12073 12074 12075 12076 12077 12078 12079 12080 12081 12082  
 12083 12084 12085 12086 12087 12088 12089 111694

COLLEGE : RAJBHAN SINGH SMARAK COLLEGE, MANIKWAR, REWA  
 PASS  
 12090 12091 12092 12093 12094 12095  
 COLLEGE : SRIYUT COLLEGE, GANGED, REWA  
 PASS  
 12099 12101 12102 12103 12104 12105  
 PROMOTED  
 12096

COLLEGE : GOVT. COLLEGE, AMARPATAN, SATNA

PASS  
12106 12107 12108 12109 12110 12111 12112 12113 12115 12116 12117  
12118 12119 12120 12124 12125  
PROMOTED  
12114

COLLEGE : VINDHYANCHAL COLLEGE, JIGNA

WITHELD  
10971

COLLEGE : SAI COLLEGE, VINDHYANAGAR, SINGRAULI

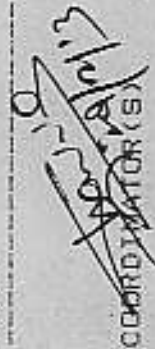
PASS  
12127  
WITHELD  
12128 12129

COLLEGE : GOVT. NEHRU COLLEGE, BURHAR, SHAHDOL


PASS  
12132 12133 12134 12135 12136  
PROMOTED  
12131

COLLEGE : GOVT. P. G. COLLEGE, BEDHARTI, SHAHDOL

WITHELD  
10978

  
COORDINATOR(S)

CONTROLLER (EXAM)

  
REGISTRAR & Controller  
K.P.S. University, Raigarh (M.P.)

Conf/2013/Result/ 15

## NOTIFICATION

The Result of the following Candidates who appeared in M.A. (3 SEM) POLITICAL SCIENCE Examination DECEMBER, 2012 are hereby declared successful (subject to scrutiny) as under.

COLLEGE :	GOVT. GIRLS COLLEGE, REWA				
PASS					
111471	111472	111473	111474	111475	111476 111477
COLLEGE :	JANTA COLLEGE, REWA				
PASS					
111502	111503	111504			
COLLEGE :	I. C. VIDYASAGAR COLLEGE, JAWA, REWA				
PASS					
111493	111494	111496	111497	111947	
WITHHELD					
10677					
COLLEGE :	GOVT. S. K. COLLEGE, MAUGANJ, REWA				
PASS					
111478	111479	111480	111481	111482	111483 111484 111485 111486 111487 111488
COLLEGE :	RAJBHAN SINGH SMARAK COLLEGE, MANIKWAR, REWA				
PASS					
111498	111499	111500	111501		
PROMOTED					
10704					
WITHHELD					
10701	10701	10704	10704		
COLLEGE :	SRIYUT COLLEGE, GANGE, REWA				
PASS					
111490	111491	111492			
COLLEGE :	GOVT. I. G. GIRLS COLLEGE, SATNA				
PASS					
111505	111506	111507	111508	111509	111510 111511 111512 111513 111515 111516
111517	111518	111520	111522	111523	111524 111525 111526 111527 111529 111530
111531					
WITHHELD					
111519	111521	111528			
COLLEGE :	GOVT. JALAJ TRIMURTI COLLEGE, NAGAUD				
PASS					
111544	111545	111546	111547	111548	111549 111550 111551 111552 111553 111554

111555 111556 111557 111558  
 WITHHELD  
 111559

COLLEGE : GOVT. VIVEKANAND COLLEGE, MAIHAR  
 PASS 111534 111535 111536 111537 111538 111539 111540 111541 111542 111543  
 WITHHELD  
 111532

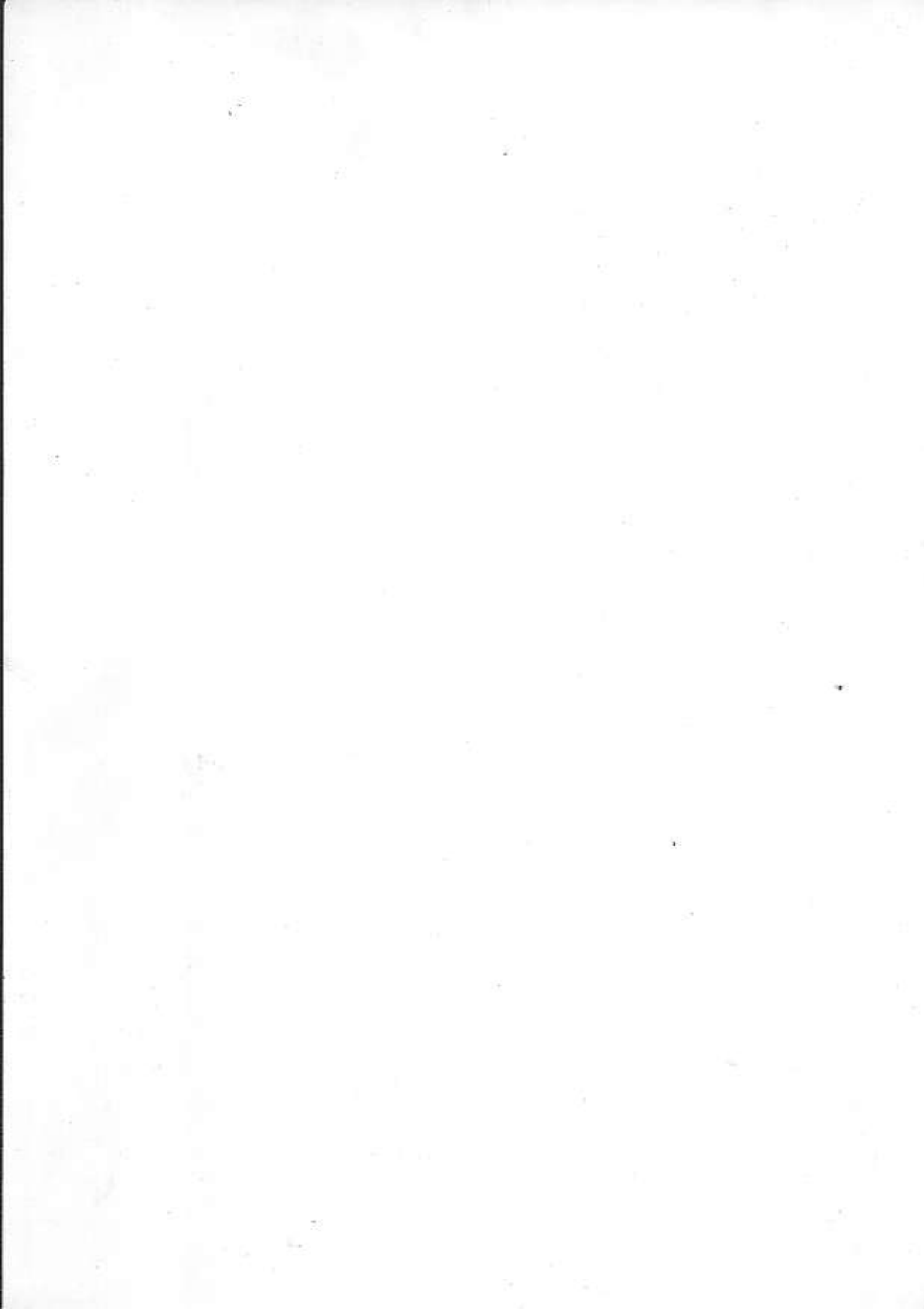
COLLEGE : VINDHYANCHAL COLLEGE, JIGNA  
 WITHHELD  
 9124

COLLEGE : GOVT. R. N. SMRITI COLLEGE, WAIDHAN, SINGRAULI  
 PASS 111561 111562 111563 111564 111565 111566 111567 111568 111569 111570  
 WITHHELD  
 10761 10761

COLLEGE : GOVT. I. G. H. S. COLLEGE, SHAHDOL  
 PASS 111571 111572 111573  
 WITHHELD  
 111396

COLLEGE : GOVT. NEHRU COLLEGE, BURHAR, SHAHDOL  
 PASS 111581 111583 111584  
 COLLEGE : GOVT. M. M. COLLEGE, KOTMA, ANUPPUR  
 PASS 111585 111586 111587 111588 111589 111591 111592 111593 111594 111595  
 111596 111597 111601 111602  
 PRDMGTED  
 10789

COLLEGE : GOVT. P. G. COLLEGE, BEDHARI, SHAHDOL  
 PASS 111560 111574 111575 111576 111577 111578 111579 111580  
 COLLEGE : GOVT. R. V. P. SINGH COLLEGE, UMARIA  
 PASS 111603 111604 111605 111606 111607 111608 111609 111611 111612 111613  
 111614 111615 111616 111617 111618 111619 111620 111622 111623 111624 111625



11626 . 111627 111628  
WITHHELD  
10795 10804

*[Handwritten signature]*

**REGISTRAR**  
Gannim University, Rewa (M.P.)

CONTROLLER (EXAM)

*[Handwritten signature]*  
COORDINATOR (S)